

3D ADVERTISING



THE IDEA IS THE KEY

WE ARE LOOKING FOR SOLUTIONS WHEN SEEMINGLY THERE IS NONE. WE REALIZE THAT NOT EVERY IDEA COMES EASILY. THAT IS WHY WE ARE PUTTING A LOT OF EFFORT INTO OUR PROJECTS. UNDER ONE ROOF WE HAVE VARIOUS CRAFTSMAN AND TECHNOLOGICAL UNITS THAT ALLOW US TO QUICKLY FULFIL OUR CUSTOMERS' IDEAS.



IT DOESN'T MATTER WHETHER IT IS 3D PROJECT, LIGHTS, GREENERY, ENVIRONMENT, SURFACE IMITATION OR FABRIC DECORATION. WE WILL CREATE THE WORLD YOU DESIRE. YOUR WISH IS OUR INSPIRATION. OUR POSSIBILITIES END WHERE YOUR IMAGINATION ENDS.

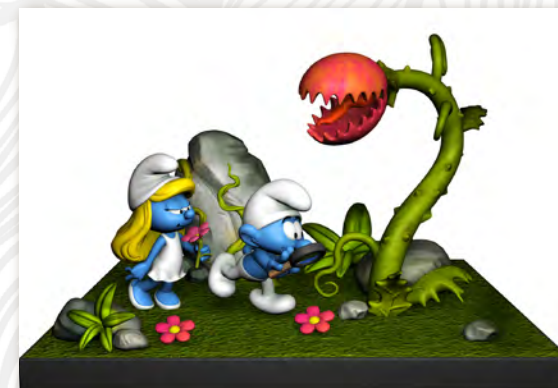


HOW DOES IT WORK?

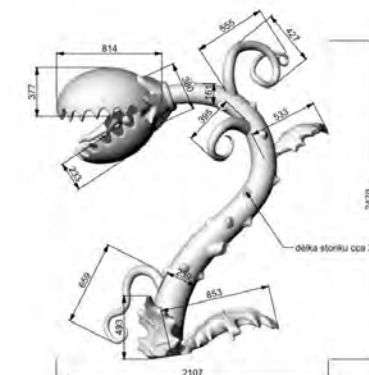
FIRSTLY WE WILL IDENTIFY YOUR NEEDS AND GOALS. WE WILL PREPARE STUDIES AND DESIGNS THAT WILL GUIDE US THROUGH OUR COMMON WORK. THE NEXT STEP INCLUDES PROJECT DOCUMENTATION, WHICH PROVIDES THE BASIS FOR PRODUCTION AND INSTALLATION. AFTER OUR SUCCEFUL REALIZATION WE WILL HAND OVER THE COMPLETE PROJECT TO YOU. WE WILL BE LOOKING FORWARD TO OUR FUTURE COOPERATION.



PROJECT STEP BY STEP



2D/3D visualization



Engineering drawing



CNC cutting of objects



Polishing the surface of polystyrene



Painting the surface



Completion / realization

COMPANY DEPARTMENTS



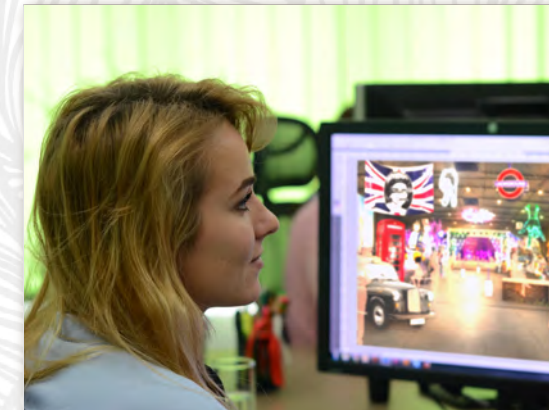
Design studio
graphic design, 3D modeling of decoration
for the CNC, print data for production



Hand drawing
creativity, graphic design



Virtual sculpting
3D modeling



2D visualization
decorations design



3D projects
3D modeling of decoration, preparing
data for CNC/print



3D print
printing according to a 3D model

HANDCRAFT



Sculpture studio

creation of sculptures from polystyrene & clay, models for forming at serial production



Painting atelier

painting & making patina of sculpture surfaces & 3D models



Surface treatment

production of forms & laminate



Smithery

welding of steel & aluminum, production of 2D & 3D motifs and constructions



Carpentry workshop

production of wooden constructions, furniture & decoration



Tailoring

sewing costumes, decorative curtains, upholstery of statues & furniture



Automatic treatment

7-axis CNC milling cutter for polystyrene, plastic, wood and polyurethane



Shotcrete

application of concrete mixture by spraying with a shotcrete machine



Mechanical treatment

use of a lathe for the processing of polystyrene & wood



Polyurethane

polyurethane spraying provides resistance to decorations



Varnishing

surface treatment of decoration with synthetic, polyurethane colors and varnishes



3D scan

mapping an object using a 3D scanner and converting it to a 3D model

REFERENCES



Our 3D decorations light up the gardening marketplace in the misty England. Oversized cans and tools will attract anyone who visits this place. The cow in the boots will conjure up a smile, artistic tubes filled with flowers will make every place much more cozy. These are the reasons why you will be happy to return to such market in addition to non-traditional and original family photo.





CHINESE NEW YEAR CELEBRATION MUNICIPAL HOUSE

To celebrate the Chinese New Year of the Dog, we have produced not only dog statue, but we have also decorated the entire Municipal House in the symbols and colours of the world's most populous country.



3D HEAD ČESKÉ BUDĚJOVICE

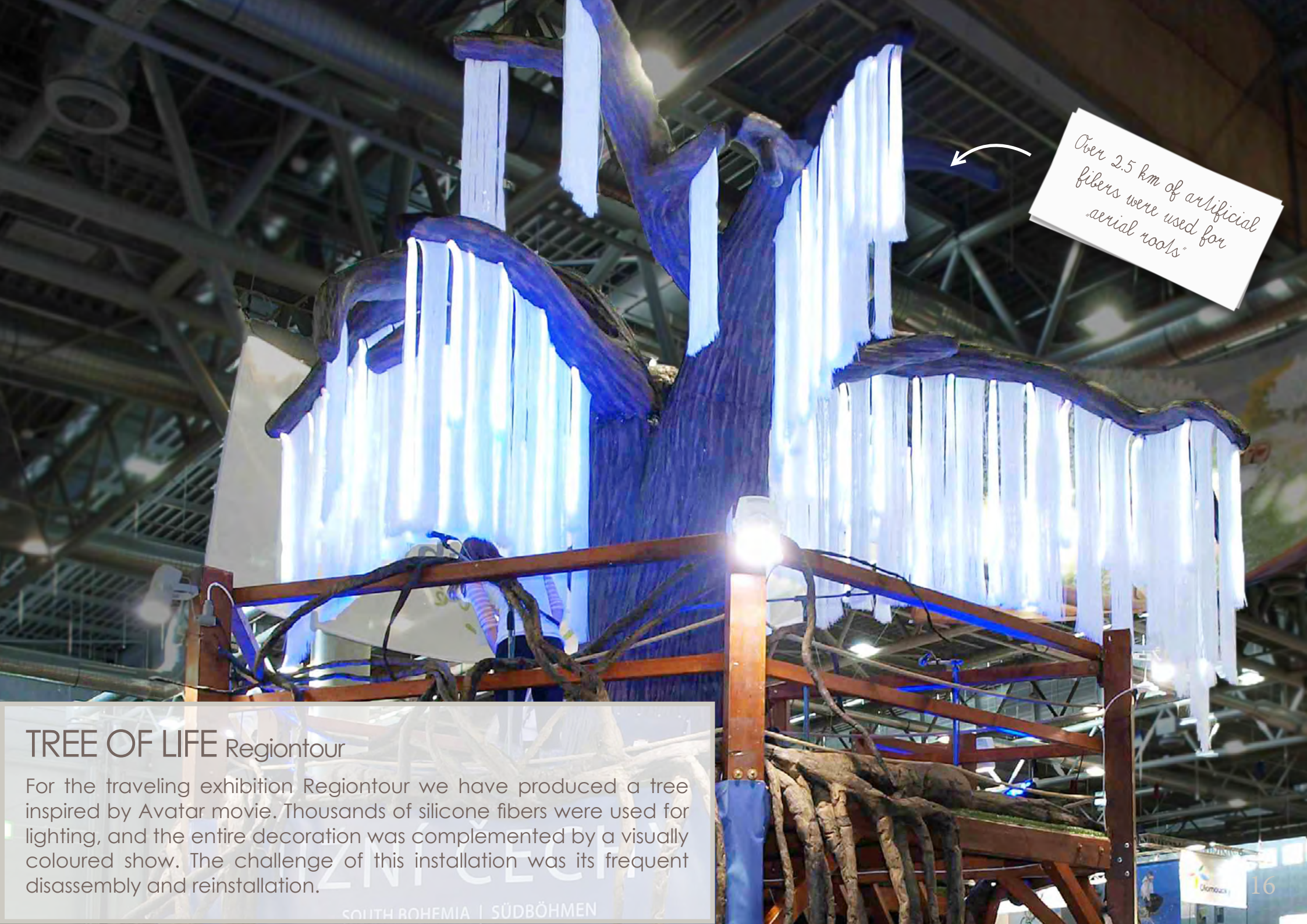
The change of expression, personality and even gender was ensured by our seven-meter face and video mapping at the event Vltava Live in České Budějovice. 3D data was created in the design department with the robotic hand for 3D modeling. The face itself was made by our seven-axis 3D milling cutter from eight parts of polystyrene blocks.



BUDDHA STAGE LAS VEGAS SHOW

In the world of globalization we execute projects overseas. Budha stage was used to represent products of the Robe company. The 3D data created by our design department were based on a mere scatch. The whole project was manufactured with CNC milling machine. Pressure resistance was ensured by polyurethane spraying.





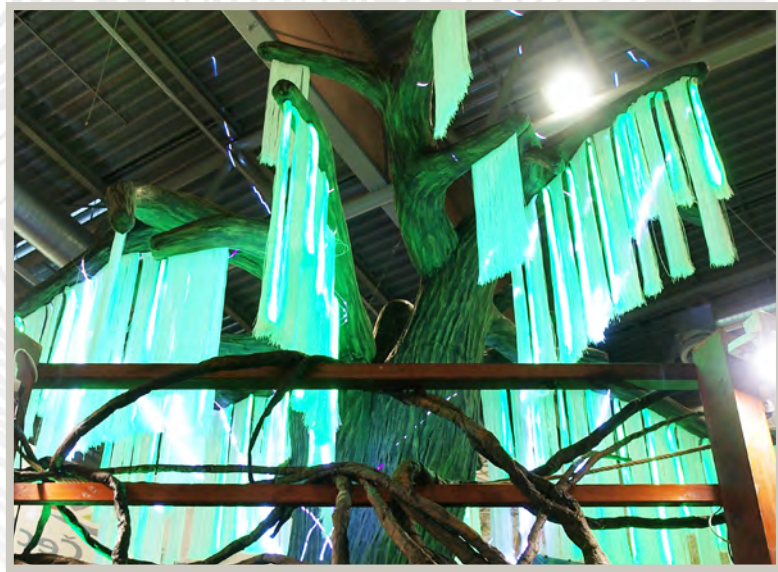
Over 2.5 km of artificial fibers were used for "aerial roots"

TREE OF LIFE Regiontour

For the traveling exhibition Regiontour we have produced a tree inspired by Avatar movie. Thousands of silicone fibers were used for lighting, and the entire decoration was complemented by a visually coloured show. The challenge of this installation was its frequent disassembly and reinstallation.

SOUTH BOHEMIA | SÜDBÖHMEN

TREE OF LIFE REGIONTOUR



GREVIN MUSEUM PRAGUE

We have produced and installed the replice of the double decker for the Grévin Wax Museum.



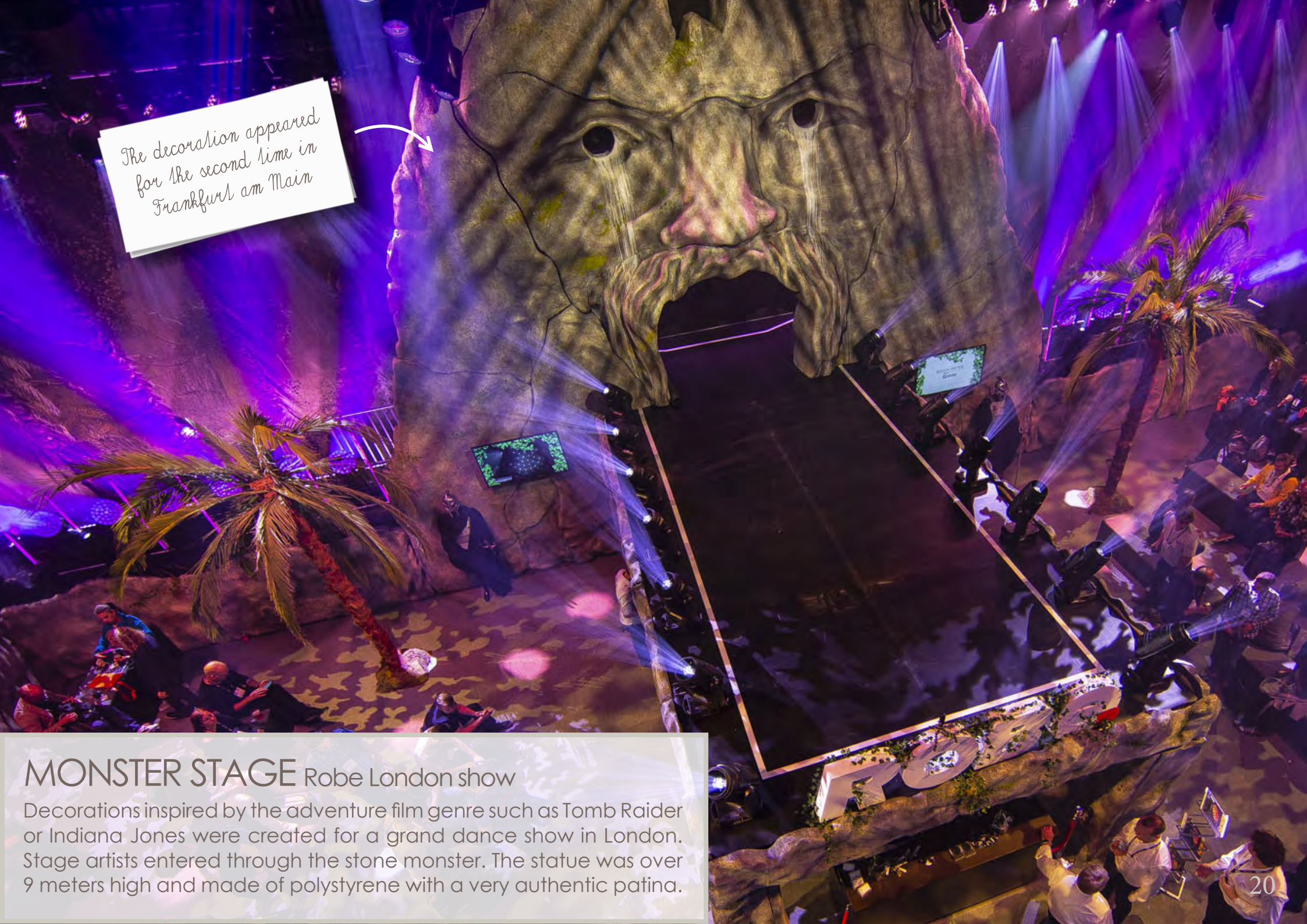
3D WINE BOTTLE BERN, SWITZERLAND



The largest bottle filled with wine was odered by French clients. Not only was the bottle successfully filled, but also emptied during the weekend event.



7 melers high, almost 9 thousand liters of wine, 45 thousand glasses of wine



MONSTER STAGE ROBE LONDON SHOW



MONSTER STAGE Robe London show
 Decorations inspired by the adventure film genre such as Tomb Raider or Indiana Jones were created for a grand dance show in London. Stage artists entered through the stone monster. The statue was over 9 meters high and made of polystyrene with a very authentic patina.



A moving scene

SMURFS EXHIBITION France, Switzerland
The Smurfs traveling exhibition has visited several shopping centers in France and Switzerland. The scenes were animated. It was first decoration, where we used 3D printing.

SMURFS EXHIBITION FRANCE, SWITZERLAND



THE MINIONS BRATISLAVA

The Minions visit to Bratislava was not without our participation. Part of the decorations were made by using virtual sculpture and CNC milling.



MY LITTLE PONY TURKEY



Little ponies, who could speak and move their head and tongues, headed to Turkey. Sculptures hide mechanisms for head and tongue movement as well as loudspeakers.





OVERSIZED PUCK Mannheim, SAP arena

Following the example of Gufex, which supplies the whole world with pucks, we also put a hand to the work. Unlike the competitor's 200 gram puck, ours weighed 3 tons.

OVERSIZED PUCK MANHHEIM, SAP ARENA



COFFEE MAKER PRAGUE

You could only get the right Grande Capuccino in Prague, where the biggest coffee machine in the world was presented. There are 3 coffee makers inside to prepare your favorite drink.



Height 500 cm,
content 3 guys
and 100 kg coffee

TRAVELLER PRAGUE



Planning holiday - only with Čedok. Čedok would probably not want this traveller we made for their marketing campaign. He had 450 cm and weighed over 860 kg.

On the plane, our
450 cm passenger
would take 6 seats



THE TREE TIM BURTON EXHIBITION, PRAGUE



THE TREE Tim Burton exhibition, Prague

They say you have to go to bed with a sketchbook. Tim Burton probably did that. Thanks to this, a sketch of a singing tree was created, which was the draft for our designers. Only after that there was an idea of the 3D tree. Authors of this work are Tim & Magda (our 3D designer).



This nice guy from Alza was in our production just for a little while. The production lasted 5 days. The statue is made of styrofoam with polyurethane coating. Everything was handmade.



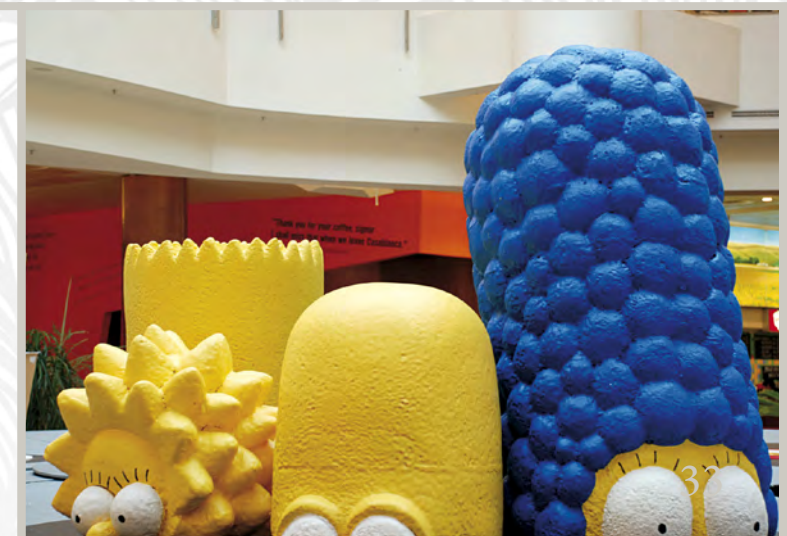
Alzak is probably a guy, but it was not specified in our assignment



Handmade, the skull still decorates the garden of a well-known politician



The Film Festival in Prague, Letňany mall, was decorated by our movie carousel with the protagonists and main themes of individual movies. Diameter is 800 cm. Installation needed to be done very quickly, construction took only 5 hours.

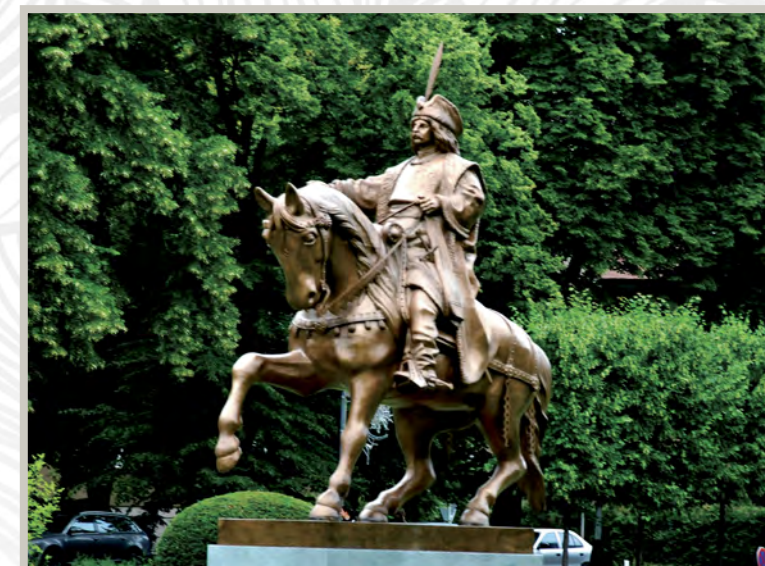
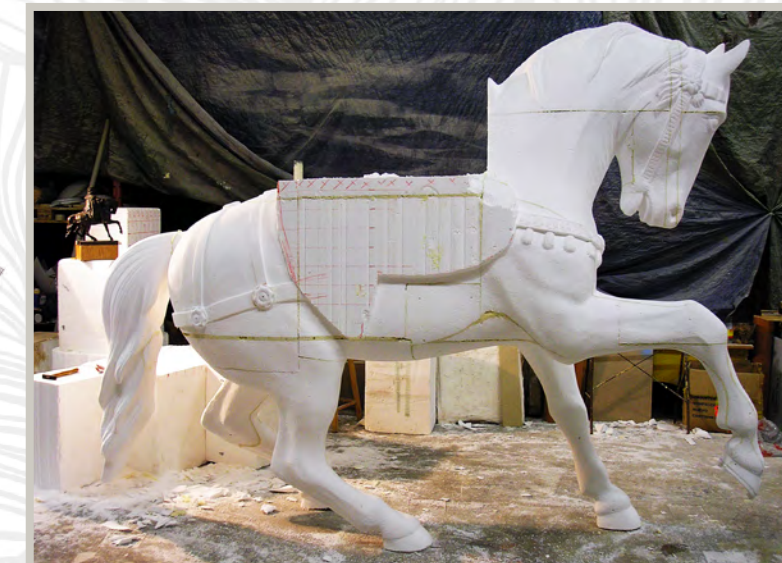




It is about one and a half
life size. Hand made
by our famous sculptor
Miroslav Ulberl

GEORGE OF PODĚBRADY Vertou, France

When representatives of the French city of Vertou signed a partnership agreement in Poděbrady, they made a walk through our spa town. Along the way, they met an equestrian statue of George of Poděbrady, which enchanted them. The partnership is all about cooperation so a year later replica traveled from our workshops to Western Europe.



ČTYŘLÍSTEK PRAGUE

The characters of Myšpulín, Fifinka, Bobík and Pindi are the main heroes of one of the longest-running Czech comics Čtyřlístek. This most famous group of friends has accompanied our childhood for 50 years. We have made several series of these iconic characters that have been part of themed events, children's parties, exhibitions, or the premiere of Čtyřlístek Adventure movie.



KAT VON D LIPSTICK SEPHORA, PRAGUE

The dream of many ladies. Endless lipstick. The oversized model would last for 14 years with moderate usage.





CAPAROL Prague

Embossed objects are the simplest for CNC milling. We can mill an elephant in 7 hours. The materials used are polystyrene and PUR.

HOCKEY JERSEYS AVION, BRATISLAVA



The Ice Hockey World Championship is a national holiday. We were very pleased that we could be part of these celebrations. The largest skate in Europe was installed in Bratislava and had over 500 cm.



Even the giant would feel small in our jersey, sleeve span is 320 cm, peg height is 90cm

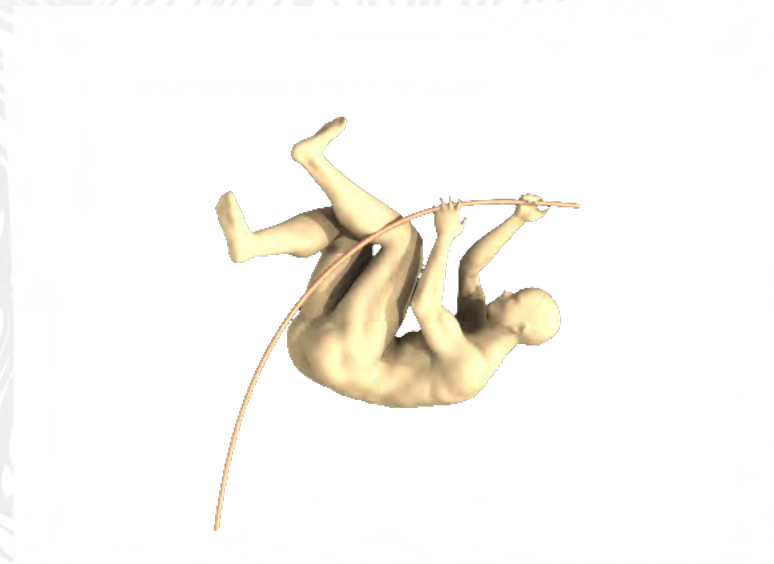
ICE SKATES AVION, BRATISLAVA

We made the skate by hand according to the original. Production lasted 21 days. The material is polystyrene, polyurethane and foil.





JUMPER HARFA, PRAGUE



FOOTWEAR AD ADIDAS

Mostly we use polystyrene and polyurethane for the production of our models. We also use ropes for shoe laces. Production is done by a CNC milling machine. Surface of the model is covered by PUR material which guarantees durability even in the exterior. The size will not fit everybody though.



FOOTWEAR AD REEBOK

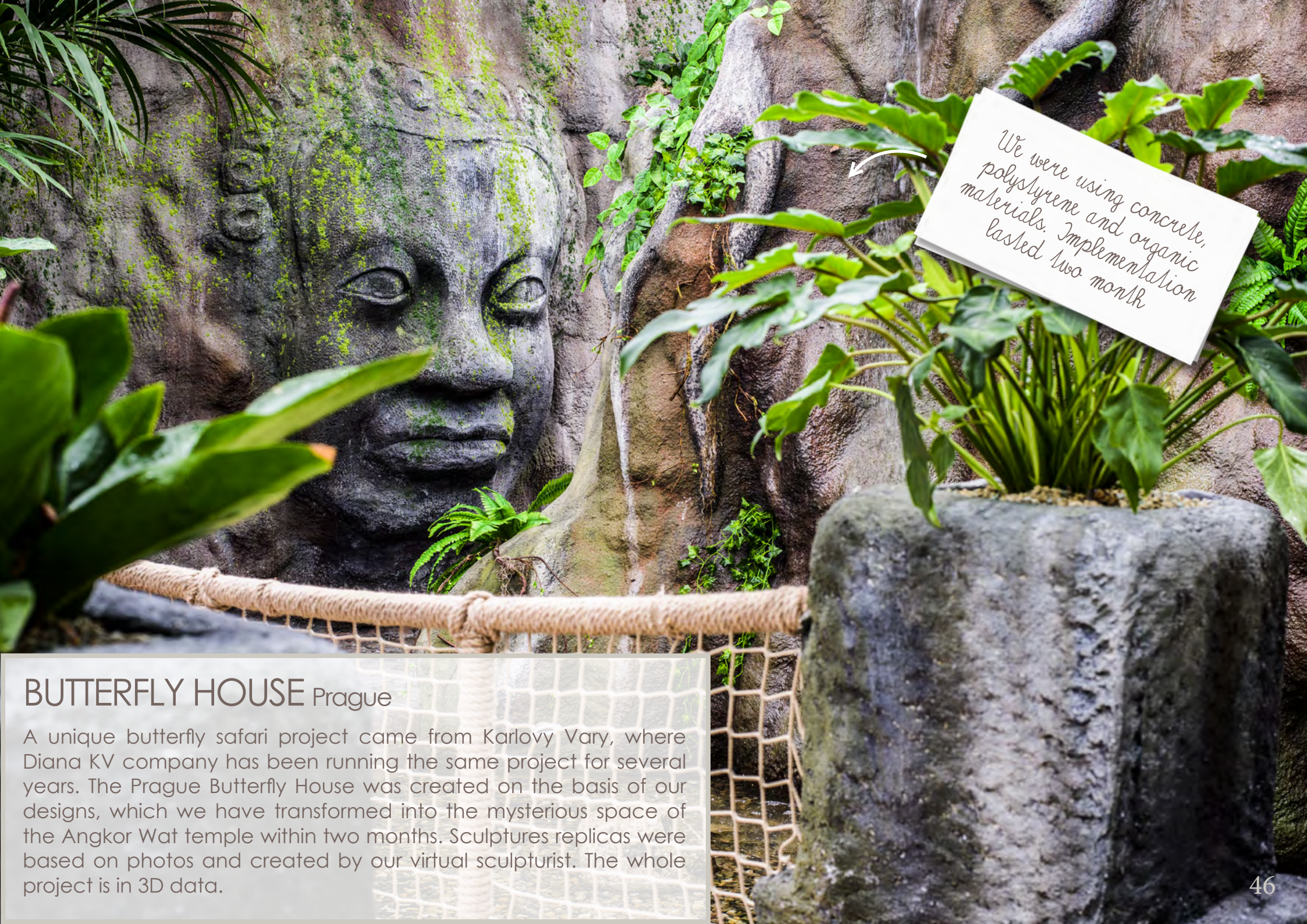
We produce shoe models for many world brands. It is always an oversized eye-catchers for stores where they serve as photopoints. The delivered original is scanned and consequently the CNC milling machine cuts the model according to the obtained data.



According to European shoe numbering, this is size 495



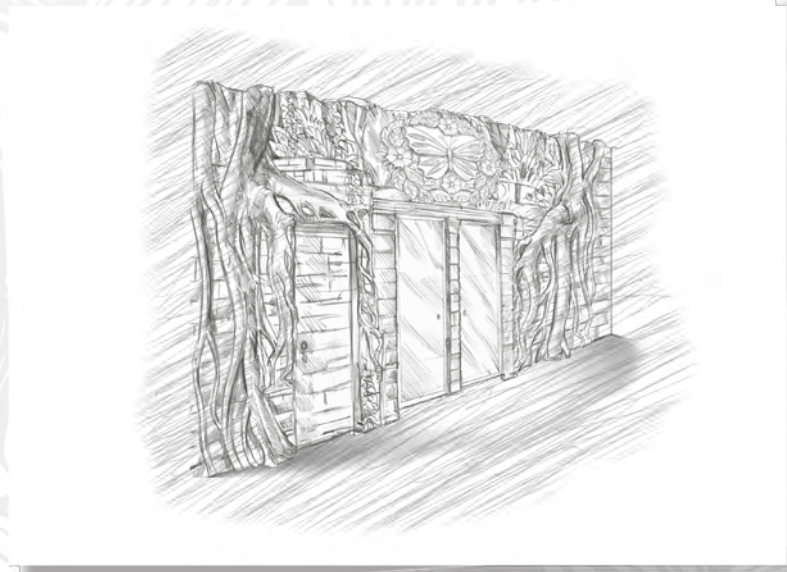
The shoe length of 2.5m is not for every Cinderella



BUTTERFLY HOUSE Prague

A unique butterfly safari project came from Karlovy Vary, where Diana KV company has been running the same project for several years. The Prague Butterfly House was created on the basis of our designs, which we have transformed into the mysterious space of the Angkor Wat temple within two months. Sculptures replicas were based on photos and created by our virtual sculpturist. The whole project is in 3D data.

BUTTERFLY HOUSE PRAGUE





THANK YOU
FOR ATTENTION



WE ARE LOOKING FORWARD
TO YOUR PROJECTS, IDEAS
AND CHALLENGES THAT WE
WILL BE HAPPY TO HELP YOU
WITH.